

## QUALIFYING INFORMATION FOR PLAYERS

### **HOST CLUB**

Comanche Trace (Hills – Creeks)  
2801 Comanche Trace Drive  
Kerrville, TX 78028  
Golf Pro Shop: (830) 895-8500  
<http://comanchetrace.com/>

**FORMAT/QUALIFYING PLACES:** 18 Holes of individual stroke play qualifying. Players will be competing for 2 qualifying spots and 2 alternate positions. Successful qualifiers will be advancing to the U.S. Mid-Amateur Championship to be played September 25-30, 2021 at Sankaty Head Golf Club in Siasconset, Massachusetts.

**PARKING:** Players & caddies are asked to utilize the Honor House parking lot. Please follow club directional signage to Honor House.

**CHECK-IN:** Upon arrival, please proceed to the registration tent to complete COVID Assessment and receive qualifying information. Registration will be located at the driving range.

**STARTING TIMES:** Starting times and pairings will be released on Wednesday, August 11<sup>th</sup>. Starting times, pairings and complete results can be found by visiting the Texas Golf Association website at [www.txga.org](http://www.txga.org).

**PRACTICE FACILITIES:** Practice facilities will open at 7:00 am.

**CADDIES:** Caddies are permitted and must be provided by the player.

**TRANSPORTATION:** Players and their caddies must walk at all times during the qualifying round, unless authorized by a Rules Committee member. A push/pull cart may be used to transport clubs.

**SPECTATOR CARTS:** Spectator carts are not permitted. Spectators must walk at all times.

**PRACTICE ROUND AVAILABILITY:** Players may contact the golf shop after the close of entries (August 4<sup>th</sup>, 2021 – 5:00 pm EDT) at (830) 895-8500 to schedule a practice round. Practice rounds will be available to players at a rate of \$20. This fee includes range balls, but not a cart. **PRACTICE ROUNDS ARE AVAILABLE TO PLAYERS ONLY & LIMITED TO ONE DISCOUNTED ROUND PER PLAYER.**

**PLAYOFF:** In the event of a tie for the last qualifying places, ties for qualifying spots and alternate positions will be decided by a sudden death, hole-by-hole, playoff immediately after all scores have been verified. It is the players responsibility to be present if a playoff is needed.

**FOOTWEAR:** Shoes with traditionally designed spikes (regardless of composition, i.e., ceramic, plastic, etc.) or spikes, regardless of design, comprised either entirely or partially of metal (if such metal may come in contact with the course) are prohibited during the stipulated round.

**GROOVES:** The players clubs must conform to the grooves and punch mark specifications in The Rules of Golf that are effective from January 1, 2010. *See Model Local Rule G2 for details.*

**DISTANCE MEASURING DEVICES:** Under Rule 4.3a, Distance Measuring Devices (DMD) are permitted at all USGA qualifying events, including Opens. DMDs may be used to measure distance only, all other functions must be turned off. If during the round a player or their caddie uses the device to gauge or measure other conditions that might effect their play (e.g. elevation changes, wind speed, etc.) the player is in breach of **Rule 4.3**, for which the penalty is Two Strokes and for any subsequent offense of Rule 4.3 – **DISQUALIFICATION**. *See page 7 of Player Packet for details.*

**ONE BALL CONDITION:** As a reminder to all players the “One Ball Condition” is in effect for Qualifying. *See Model Local Rule G4 for details.*

# U.S. Mid-Amateur Qualifying

Comanche Trace | Kerrville, TX

August 16, 2021



in association with



**EVACUATION PLAN:** In the event of a discontinuance of play during the qualifier, players must adhere to the evacuation plan distributed in the Player Packet.

**QUALIFYING ROUND FEES:** Fees are included in the USGA championship entry fee.

**GOLF SHOP/LOCKER ROOM/PRACTICE AREAS:** Players will have limited access to locker room and clubhouse facilities.

**PERSONAL APPEARANCE:** In Local and Sectional Qualifying stages and the Championships proper, players must be neat in appearance with respect to clothing and personal grooming. The Committee in charge decides whether this requirement has been met and has the authority to withdraw the entry of a player who does not comply. Players may wear short or pants at qualifying.

**FOOD SERVICE:** Food and beverage services will not be available for purchase. Bottle water will be available on the course.

**LOCAL ACCOMMODATIONS:** There are a number of hotels available nearby in the Kerrville area.

**USGA Official-in-Charge:**

Donna Brady, USGA Committee Member

[donnabradygolfer@gmail.com](mailto:donnabradygolfer@gmail.com)

**TGA Point-of-Contact:**

Read Langhenry, Tournament Director

[rlanghenry@txga.org](mailto:rlanghenry@txga.org)

Office: (214) 468-8942 x304

Cell: (770) 530-7390

| <u>Name</u>           | <u>City, State</u>      | <u>Name</u>        | <u>City, State</u>     |
|-----------------------|-------------------------|--------------------|------------------------|
| Bloomfield, Aaron     | San Antonio, Texas      | Schumacher, Nick   | Prosper, Texas         |
| Board, Martin         | Midland, Texas          | Seybert, Miles     | Lubbock, Texas         |
| Branum, Lane          | Midland, Texas          | Shivers, Brady     | Seminole, Texas        |
| Burniston, Michael    | Kerrville, Texas        | Simmerman, Danny   | Shavano Park, Texas    |
| Butterfield, Will     | Austin, Texas           | Sulzer, Rick       | Carrollton, Texas      |
| Cohen, Brent          | McKinney, Texas         | Swanson, Josh      | Austin, Texas          |
| De La Cruz, Christian | Austin, Texas           | Traweek, Austin    | Houston, Texas         |
| de Leon, Carlos       | San Antonio, Texas      | Tucker, Caleb      | Round Rock, Texas      |
| Dennis, Clark         | Fort Worth, Texas       | Ulmo, George       | Midland, Texas         |
| Devlin, Kris          | Austin, Texas           | Van Delden, Peter  | San Antonio, Texas     |
| Dicosimo, Patrick     | Olmos Park, Texas       | Vondrak, Greg      | San Antonio, Texas     |
| Edmondson, Kirk       | Lantana, Texas          | Wallach, Sam       | Austin, Texas          |
| Ellis, Alex           | austin, Texas           | Watson, Court      | Leander, Texas         |
| Elswick, Jeffery      | San Antonio, Texas      | Westacott, Shawn   | Kerrville, Texas       |
| Evans, Robert         | Austin, Texas           | White, James       | San Angelo, Texas      |
| Evans, Tanner         | Abilene, Texas          | Wilkerson, William | Lubbock, Texas         |
| Ferrero, Thomas       | Dallas, Texas           | Williams, Matthew  | Fair Oaks Ranch, Texas |
| Freeland, Corey       | Horseshoe Bay, Texas    |                    |                        |
| Galloway, Kevin       | San Antonio, Texas      |                    |                        |
| Gammill, Tyler        | Austin, Texas           |                    |                        |
| Gandy, Grant          | Fair Oaks Ranch, Texas  |                    |                        |
| Germann, Chris        | Dripping Springs, Texas |                    |                        |
| Gibbs, Richard        | Tomball, Texas          |                    |                        |
| Griffin, Will         | Lufkin, Texas           |                    |                        |
| Griffiths, Jamie      | Austin, Texas           |                    |                        |
| Hamm, Tim             | Austin, Texas           |                    |                        |
| Hansen, Wes           | Austin, Texas           |                    |                        |
| Hardy, Kiley          | Spring Branch, Texas    |                    |                        |
| Harwell, Colby        | San Antonio, Texas      |                    |                        |
| Healy, Luke           | San Antonio, Texas      |                    |                        |
| Hope, Kyle            | Austin, Texas           |                    |                        |
| Howard, Jeff          | Plano, Texas            |                    |                        |
| Lehmann, Tyler        | San Antonio, Texas      |                    |                        |
| Lucas, John           | Boerne, Texas           |                    |                        |
| Manoogian, John       | Bee Cave, Texas         |                    |                        |
| Mansour, John         | Austin, Texas           |                    |                        |
| Martin, Weldon        | Houston, Texas          |                    |                        |
| Massengale, Jesse     | Conroe, Texas           |                    |                        |
| Mccauley, Sean        | Dallas, Texas           |                    |                        |
| Meyers, Andrew        | Prosper, Texas          |                    |                        |
| Miller, Jordan        | Katy, Texas             |                    |                        |
| Moore, Jace           | Keller, Texas           |                    |                        |
| Noonan, Brian         | Austin, Texas           |                    |                        |
| Nosewicz, Nick        | Aurora, Colorado        |                    |                        |
| Oconnor, Donald       | McKinney, Texas         |                    |                        |
| Ohlmeyer, Todd        | Austin, Texas           |                    |                        |
| Robbins, Kyle         | Keller, Texas           |                    |                        |
| Rodriguez, Clayton    | San Antonio, Texas      |                    |                        |
| Ross, Hudson          | Austin, Texas           |                    |                        |
| Roudebush, Scott      | Dallas, Texas           |                    |                        |
| Russell, Jordan       | San Antonio, Texas      |                    |                        |

## U.S. Mid-Amateur Qualifying

The Club at Comanche Trace | Kerrville, TX  
August 16, 2021



in association with



### APPROXIMATE YARDAGES

The hole numbers and yardages depicted below, as well as those on the Official Scorecard, are indicative of the approximate yardages for the qualifying. The qualifying will be contested from these distances, or a location forward of the listed yardage. Note that this yardage will fluctuate based on the proximity of hole locations for the qualifying round.

| The Club at Comanche Trace - Hills/Creeks (76.0/137) |     |     |     |     |     |     |     |     |     |      |       |
|--|-----|-----|-----|-----|-----|-----|-----|-----|-----|------|-------|
| Front 9 (Hills)                                      | 1   | 2   | 3   | 4   | 5   | 6   | 7   | 8   | 9   | OUT  |       |
| Par  | 4   | 4   | 3   | 5   | 4   | 4   | 4   | 3   | 5   | 36   |       |
| Tee  | 433 | 437 | 167 | 533 | 461 | 318 | 460 | 184 | 525 | 3518 |       |
|  |     |     |     |     |     |     |     |     |     |      |       |
| Back 9 (Creeks)                                      | 10  | 11  | 12  | 13  | 14  | 15  | 16  | 17  | 18  | IN   | TOTAL |
| Par  | 4   | 4   | 3   | 5   | 3   | 4   | 4   | 5   | 4   | 36   | 72    |
| Tee  | 417 | 438 | 177 | 552 | 164 | 466 | 460 | 561 | 447 | 3682 | 7200  |

## **USGA PACE OF PLAY POLICY**

### **Summary**

When a group is out of position at any check-point the players in the group are subject to penalty under the USGA Pace of Play Policy. Players in a group that has missed one or more check-points will be subject to penalty according to the following schedule of penalties pending final determination of whether a breach or breaches of this policy have occurred:

Check-points will be on completion (flagstick in the hole) of the 9<sup>th</sup> and 18<sup>th</sup> holes.

1<sup>st</sup> missed check-point – subject to one (1) penalty stroke.

2<sup>nd</sup> missed check-point – subject to additional two (2) penalty strokes; total of three (3) penalty strokes for the round.

### **Maximum Allowable Time**

Play is in groups of three (3). Each group is allotted 2 hours and 15 minutes to complete holes 1 through 9 and 2 hours and 17 minutes to complete holes 10 through 18, plus turn time (3 minutes for 9 to 10 & 5 minutes for 18 to 1) at a pace in accordance with the time chart below. When a group falls behind – regardless of reason – it must regain its position. Time for ball searches, rulings and walking or shuttle time between holes is included in the allotted time.

### **Definition of “Out of Position” – Stroke Play**

First Group: The first group (off the 1<sup>st</sup> and 10<sup>th</sup> holes) is out of position if they take more than the allotted time to finish a check-point hole; see below check-point time table.

Following Groups: A following group is out of position if they:

- take more than the allotted time to finish a check-point hole; and
- complete play of a check-point hole more than 14 minutes after the preceding group completed play of that hole.

Time charts outlining the time per hole, including the finish times for the check-point holes are below.

Check-points: Play of the hole must be completed in the following amount of time, groups of three (3):

| <b>Check-points:</b>   | <b>1<sup>st</sup> / 2<sup>nd</sup></b> |
|------------------------|--|
| Hole 1 Start (Hills)   | 2:15/4:35                              |
| Hole 10 Start (Creeks) | 2:17/4:35                              |

### **Group Out of Position**

When a group is out of position at a check-point, they will be notified by a member of the Rules Committee. When a group has been notified of a missed check-point, that group is expected to regain its position before reaching the next check-point. If that group reaches the next check-point out of position, each player in the group may incur the applicable penalty for a breach of this policy. Any group that is out of position may be monitored by a member of the Rules Committee.

A player concerned about a non-responsive (slow) player in their group, who is delaying play, may request a Rules Committee member to monitor the group in case the group is or becomes liable to penalty under these guidelines.

### **Final Determination Regarding Break and Review Process**

Before returning their scorecard, a player who is subject to penalty during their round may consult with the Rules Committee to determine if they have incurred a penalty under this policy. The Rules Committee will determine that a player who has been found to be out of position is not in breach of this policy only if:

- the player was delayed by the Rules Committee; or
- the player was delayed by a circumstance beyond the control of the player or their group; or
- the player was delayed by another player in the group.

A player who was out of position during their round and who elects not to consult with the Rules Committee to determine whether they were in breach of this policy is deemed to be in breach of this policy and incurs a penalty or penalties according to the above schedule of penalties. If a player or group incurs a penalty or penalties, they are applied to the check-point hole(s) where the breach occurred.

## EVACUATION PLAN: STOPPING AND RESUMING PLAY

### Stopping and Resuming Play

An immediate suspension will be signaled by one prolonged airhorn note. All other types of suspension will be signaled by three consecutive airhorn notes. Resumption of play will be signaled by two short airhorn notes.

- **Immediate Suspension (Imminent Danger):** One prolonged airhorn note. All players must stop play at once and must not make another stroke until the Committee Resumes Play. See Rule 5.7b(1).
- **Normal Suspension (Darkness or Unplayable Course Conditions):** Three consecutive airhorn notes. If all players in the group are between two holes, they must stop play and must not make a stroke to begin another hole until the Committee resumes play. If any player in the group has started a hole, the players may choose either stop play or to play out the hole. See Rule 5.7b(2).
- **Resuming Play:** Two short airhorn notes. See Rule 5.7c.

Local Rule as prescribed in Section 8 of the Committee Procedures is in effect. Model Local Rule J-1.

***Penalty for Breach of Rule 5.7b and Rule 5.7c – Disqualification***

### Practice Areas

- **Immediate Suspension (Dangerous Situation):** All practice facilities are closed during an immediate suspension for a dangerous situation until the Committee has declared them open. Players who practice on closed practice areas will be asked to stop practicing; failure to stop practicing may result in disqualification.
- **Normal Suspension:** Players may practice as the Committee provides.

### Evacuation Procedure

- **Immediate Suspension (Dangerous Situation):** Players must immediately evacuate to the listed locations.
- **Normal Suspensions:** Unless otherwise instructed by the Committee, players are to proceed to the listed locations.

### Where to Evacuate and Pick-Up Areas

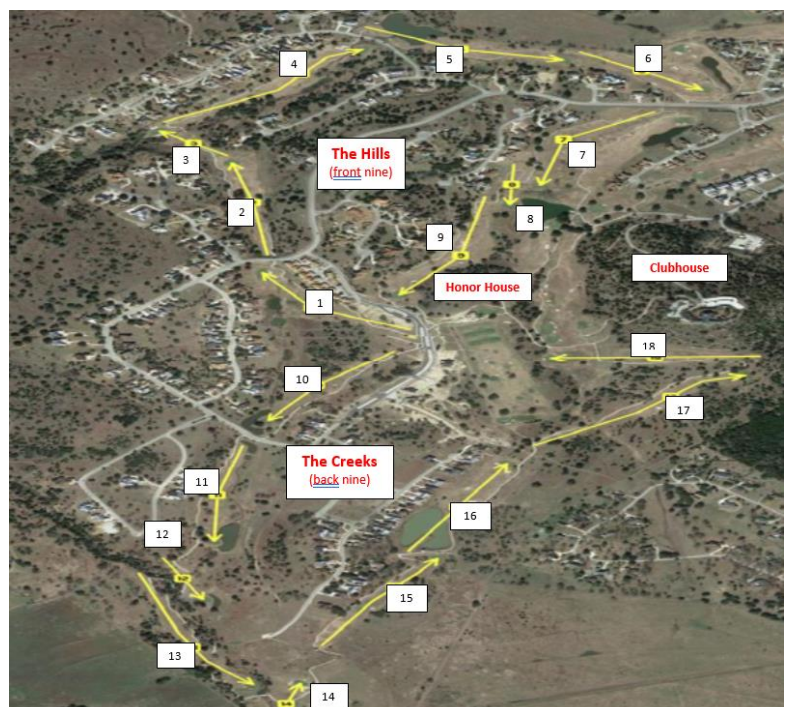
Main Shelter (**Clubhouse**)

Secondary Shelter (**Honor House**)

Tertiary Shelter (**On-Course Restrooms**)

### Clubhouse Evacuation Rooms:

- Main dining room
- Pro shop
- Locker room
- Other committee designated areas







# Local Rules and Terms of the Competition

## FOR 2021 USGA CHAMPIONSHIPS

*The Rules of Golf as approved by the United States Golf Association and R&A Rules Limited govern play. These Local Rules and Terms of the Competition are in effect at all USGA championships and qualifying rounds. See applicable championship or qualifying round Notice to Players and Entry Application for modifications or additions to these Local Rules and Terms of the Competition. Complete text of the Rules and Local Rules may be found in the Official Guide to the Rules of Golf, effective January 2019.*

**Unless otherwise noted, the penalty for breach of a Local Rule is the general penalty.**

**Out of Bounds** — Defined by the line between the course-side points of white stakes and fence posts at ground level.

**Penalty Areas** — When a penalty area is defined on only one side, it extends to infinity. When a penalty area is connected to the out-of-bounds edge, the penalty area extends to and coincides with out of bounds.

**Ground Under Repair** — Defined by white lines. French drains are ground under repair. For grass-covered trenching, see Temporary Power Lines and Cables.

Ground under repair may include areas of unusual damage, including areas where spectators or other traffic has combined with wet conditions to affect materially the ground surface, but only when so declared by an authorized member of the Committee. When immediately adjacent to an immovable obstruction, such an area is part of that obstruction.

**Relief from Seams of Cut Turf** — Local Rule as prescribed in Section 8 of the Committee Procedures is in effect. Model Local Rule F-7.

**Immovable Obstructions** — Include plastic bumpers on roads and paths, and mats secured to the ground with spikes when the bumpers or mats cover cables.

**White-Lined Areas Tying Into Artificially Surfaced Roads and Paths** — White-lined areas of ground under repair and the artificially surfaced roads, paths or other identified obstructions that they are connected to are a single abnormal course condition when taking relief under Rule 16.1.

**Wood Chips and Mulch** — Are loose impediments.

**Integral Objects** — Include cables, rods, wires and wrappings when closely attached to trees, and artificial walls and pilings when located in penalty areas or in or adjacent to bunkers, and bunker liners.

An exposed bunker liner may be treated as ground under repair, but interference does not exist if the liner interferes only with the player's stance.

**Temporary Power Lines and Cables** — Local Rule as prescribed in Section 8 of the Committee Procedures is in effect. Model Local Rule F-22.

**Temporary Immovable Obstructions** — Local Rule as prescribed in Section 8 of the Committee Procedures is in effect. Model Local Rule F-23.

**List of Conforming Driver Heads** — Local Rule as prescribed in Section 8 of the Committee Procedures is in effect. Model Local Rule G-1.

**Groove and Punch Mark Specifications** — Local Rule as prescribed in Section 8 of the Committee Procedures is in effect, except as modified by the applicable championship Entry Application. Model Local Rule G-2.

**List of Conforming Golf Balls** — Local Rule as prescribed in Section 8 of the Committee Procedures is in effect. Model Local Rule G-3.

**One Ball Rule** — Local Rule as prescribed in Section 8 of the Committee Procedures is in effect. Model Local Rule G-4.

**Broken or Significantly Damaged Club** — Local Rule as prescribed in the Clarifications to the 2019 Rules of Golf is in effect. Model Local Rule G-9.

**Back-On-the-Line Relief** — Local Rule as prescribed in the Clarifications to the 2019 Rules of Golf is in effect. Model Local Rule E-12.

**Limiting When Stroke Made From Putting Green Must Be Replayed Under Exception 2 to Rule 11.1b** — Local Rule as prescribed in the Clarifications to the 2019 Rules of Golf is in effect. Model Local Rule D-7.

**Pace of Play** — See separate memorandum to players for pace of play policy, when applicable.

**Stopping and Resuming Play** — Local Rule as prescribed in Section 8 of the Committee Procedures is in effect. Model Local Rule J-1.

All practice areas are closed during an immediate suspension for a dangerous situation until the Committee has declared them open. Players who practice on closed practice areas will be asked to stop practicing; failure to stop practicing might result in disqualification.

An immediate suspension will be signaled by one prolonged airhorn note. All other types of suspension will be signaled by three consecutive airhorn notes. Resumption of play will be signaled by two short airhorn notes.

**Practice** — Prior to and after a round in stroke play, a player may practice on the designated practice areas. Rule 5.2b covering practice in stroke play is modified in this way: A player may not practice on the competition course before or between rounds. Penalty for breach of Local Rule, see Rule 5.2.

**Prohibiting Use of Motorized Transportation** — Local Rule as prescribed in Section 8 of the Committee Procedures is in effect. Model Local Rule G-6.

**When Competition Is Final** — The competition is final when the trophy has been presented to the winner or, in the absence of a prize ceremony, when all scores have been approved by the Committee.